



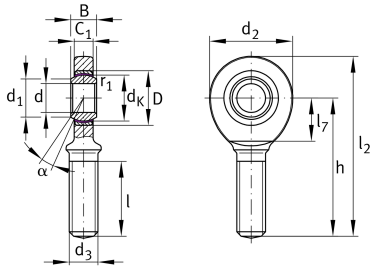
GAL6-UK

Rod end

Schaeffler ID:
0066339190000

Rod end with external thread, left hand thread, maintenance-free, sliding layer: PTFE composite, DIN ISO 12240-4, dimension series E, type M, inner ring curved surface with hard chromium coating, open design

Technical information



Main Dimensions & Performance Data

d	6 mm	Bore diameter bearing
d ₂	21 mm	Outer eye diameter
D	14 mm	Outside diameter bearing
l ₂	46.5 mm	Total length external thread rod
B	6 mm	Width inner ring
C _r	3,600 N	Basic dynamic load rating, radial
C _{0r}	6,930 N	Basic static load rating, radial
	16.6 g	Weight

Dimensions

d _K	10 mm	Ball diameter
d ₁	8 mm	Outer flange diameter inner ring
d ₃	M6	Thread size
h	36 mm	Shank Length External thread rod
C ₁	4.4 mm	Width of the rod end
α	13 °	Tilt angle
l ₁	18 mm	Thread length external thread
l ₇	12 mm	Distance drilling with/shaft start
G _r	0 - 0,032 mm	Radial Clearance
d _{OT}	0 mm	Bore diameter bearing, upper tolerance
d _{UT}	-0.008 mm	Bore diameter bearing, lower tolerance
B _{OT}	0 mm	Width inner ring, upper tolerance
B _{UT}	-0.12 mm	Width inner ring, lower tolerance

Mounting dimensions

r _{1smin}	0.3 mm	Edge Spacing
--------------------	--------	--------------

Temperature range

T _{min}	-50 °C	Operating temperature min.
T _{max}	200 °C	Operating temperature max.